

## Review of Operations Environment Plans: Reindeer Wellhead Platform and Offshore Gas Supply Pipeline Devil Creek Gas Supply Pipeline and Sales Gas Pipeline

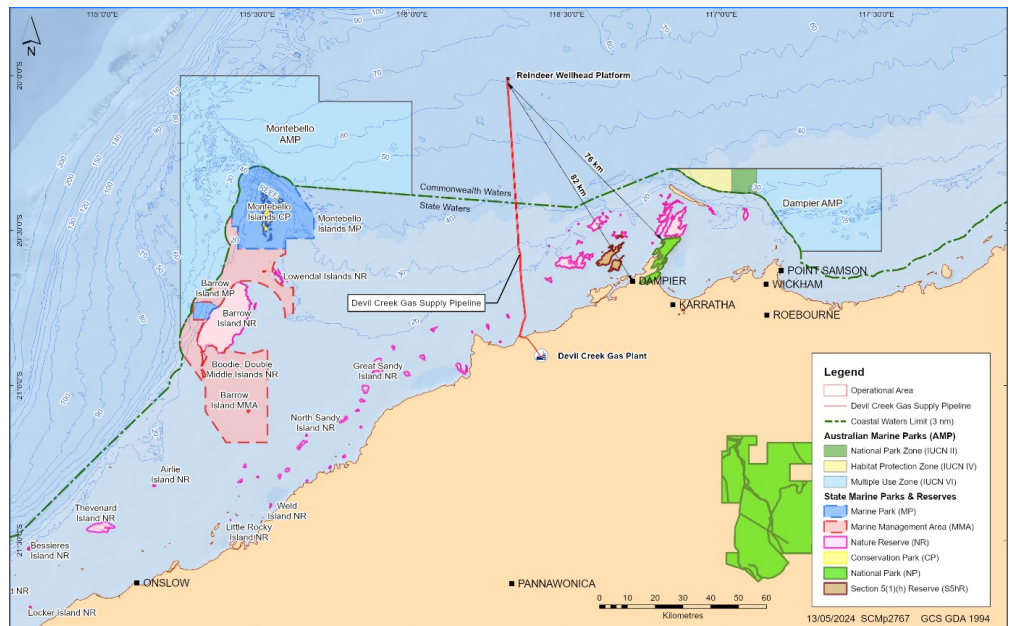
### Information overview

Santos provides this supplementary information for commercial fishers as part of regulatory consultation activities for the five-year revisions of the Operations Environment Plans (EPs) for our Reindeer Wellhead Platform (WHP) and Devil Creek gas supply pipeline (DC supply pipeline) in Commonwealth waters and the State waters section of the DC supply pipeline in the Carnarvon Basin.

The revision of the EPs supports ongoing operations, as well as the preservation of facilities and pipelines, following the Cessation of Production (CoP), with the Reindeer field nearing the end of economic field life. Two EPs will be prepared, once each for Commonwealth and WA State jurisdiction.

Santos is seeking input from commercial fishers by **29 July 2024**. Details on consultation and providing input can be found on the back page of this fact sheet. Pre and post activity notifications are also available upon request.

General fact sheets on proposed activities in Commonwealth waters and WA State land and waters, including potential environmental impacts risks and associated management measures, can be found at [santos.com/offshoreconsultation](https://santos.com/offshoreconsultation)



**Figure 1.** Reindeer and Devil Creek Operations

Activity details	
<b>Proposed activity</b>	<ul style="list-style-type: none"> <li>Production and transportation of hydrocarbons from the offshore Reindeer field to the onshore Devil Creek Gas Plant via DC supply pipeline) and then to the Dampier to Bunbury Natural Gas Pipeline, followed by suspension of operations.</li> <li>Preservation of the Reindeer offshore facilities and offshore and onshore pipelines following the CoP.</li> </ul>
<b>Activity purpose</b>	<ul style="list-style-type: none"> <li>Ongoing gas supply to WA domestic markets.</li> <li>Preservation of facilities/pipelines ahead of a future decision by Santos on decommissioning or reuse of facilities/pipelines for potential Carbon Capture and Storage (CCS) at the depleted Reindeer field.</li> </ul>
<b>Operational Area location</b>	<ul style="list-style-type: none"> <li>Reindeer WHP – 82 km north northwest of Dampier, Western Australia.</li> <li>DC supply pipeline shore crossing – 42.6 km southwest of Dampier.</li> </ul>
<b>Water depth</b>	61 m to shore
<b>Timing and duration*</b>	The duration of ongoing operations and the timing cessation of production will be dependent on Santos' decision-making for ongoing operations as well as decommissioning or re-purposing the DC supply pipeline for CCS.
<b>Exclusion zone</b>	There is a 500 m exclusion zone around the WHP, however there is no exclusion zone around the DC supply pipeline.

\* Timing and duration of proposed activities are subject to change based on rig availability, adverse weather conditions or technical/equipment issues that may arise during operations.

## Commercial fishery implications

Santos has undertaken an assessment to define the environmental, social, economic and cultural aspects that may be affected by proposed activities. To do this we have considered the totality of the area where activity impacts and risks may occur.

The widest extent of this area is called the Environment that May Be Affected (EMBA), which for this activity is a combined EMBA for the modelled potential worst-case hydrocarbon spill scenarios (rupture of the DC supply pipeline and vessel collision releasing marine diesel oil at the sea surface).

**Table 1** provides an overview of those fisheries active in the Operational Area to determine potential for interaction with proposed activities. We have also assessed those fisheries that are entitled to fish in the EMBA. Operational Area coordinates can be found in **Table 2**.

Our fisheries assessment is based on publicly available government managed catch and effort data, our ongoing discussions with commercial fisheries representative organisations, and historic engagements for previous petroleum activities.

**Table 1. Commercial fishery assessment**

	Potential for interaction in Operational Area	Entitled to fish in the EMBA
<b>Commonwealth Fishery</b>		
North West Slope Trawl Fishery	No	Yes
Southern Bluefin Tuna Fishery	No	Yes
Western Deepwater Trawl Fishery	No	Yes
Western Skipjack Tuna Fishery	No	Yes
Western Tuna and Billfish Fishery	No	Yes
<b>Western Australian Fishery</b>		
Exmouth Gulf Prawn Limited Entry Fishery Creator	No	Yes
Mackerel Managed Fishery	Yes	Yes
Marine Aquarium Managed Fishery	Yes	Yes
Nickol Bay Prawn Limited Entry Fishery	No	Yes
Onslow Prawn limited Entry Managed Fishery	No	Yes
Pilbara Crab Managed Fishery	No	Yes
Pilbara Fish Trawl Managed Fishery	Yes	Yes
Pilbara Trap Managed Fishery	No	Yes
Shark and Demersal Gillnet and Demersal Longline Managed Fishery	No	Yes
Specimen Shell Managed Fishery	No	Yes
West Coast Deep Sea Crustacean Managed Fishery	No	Yes
West Coast Rock Lobster Managed Fishery	No	Yes
West Australian Sea Cucumber Fishery	No	Yes
Hermit Crab Fishery	No	Yes

**Table 2. Operational Area coordinates**

Operational Area	Latitude	Longitude
Reindeer WHP	20°01'26.738"S	116°18'34.999"E
DC supply pipeline shore crossing	20°49'29.891"S	116°21'07.517"E

## Consultation

---

Consultation provides Santos with an opportunity to receive input from authorities, persons and organisations whose functions, interests or activities may be affected by the proposed activities.

This input helps us to refine or change the management measures we are planning to address potential activity impacts and risks.

Santos' objective for proposed activities is to reduce environmental impacts and risks to a level that is As Low As Reasonably Practicable (ALARP) and acceptable over the life of the activity.

## Providing input

---

Santos is seeking input on proposed activities by **29 July 2024**.

The merits of relevant person feedback provided through the consultation process will be considered during EP development, with responses summarised and included in the EP submitted to NOPSEMA for assessment.

Please let us know if you would like your personal/organisational details or any part of your feedback to remain private and we will ensure this remains confidential to NOPSEMA.

More information about how community members can participate in environmental approvals for activities proposed in Commonwealth waters has been published in a **brochure** by NOPSEMA.

## Contact

---

**E:** [offshore.consultation@santos.com](mailto:offshore.consultation@santos.com)

**T:** 1800 267 600

**[santos.com/offshoreconsultation](https://santos.com/offshoreconsultation)**