

Ningaloo Vision Cessation of Production and Floating Asset Removal (CoPFAR) Environment Plan

Information overview

Santos provides this supplementary information for commercial fishers as part of regulatory consultation activities for the proposed progressive decommissioning of the Ningaloo Vision floating production, storage and offloading (FPSO) vessel and associated subsea infrastructure, in the Carnarvon Basin.

Santos is seeking input from commercial fishers by **26 June 2024**. Details on consultation and providing input can be found on the back page of this fact sheet. Pre and post activity notifications are also available upon request.

A general fact sheet on proposed activities, including potential environmental impacts risks and associated management measures, can be found at santos.com/offshoreconsultation

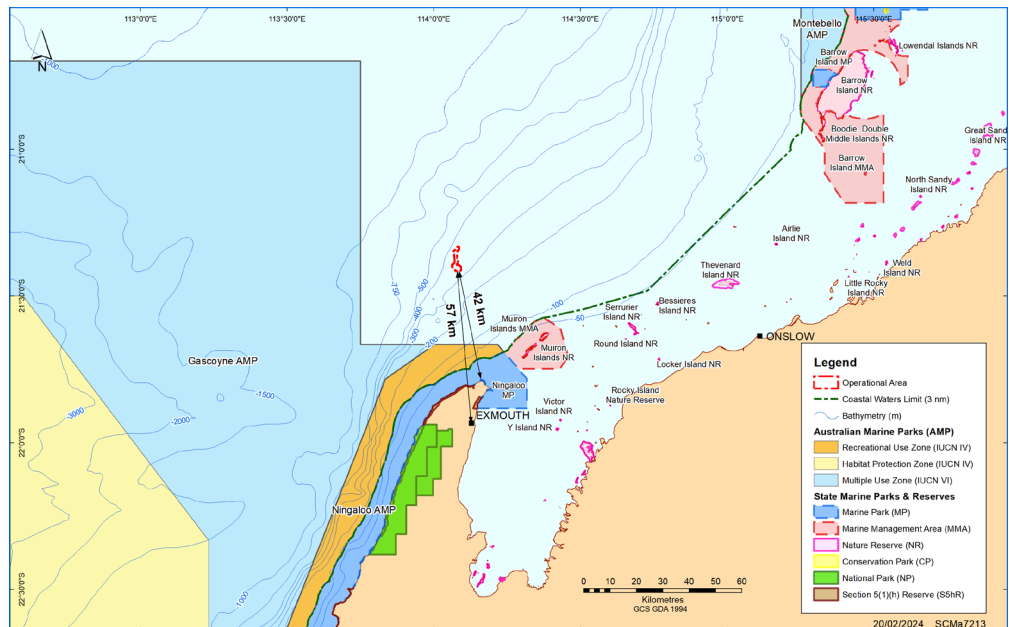


Figure 1. Ningaloo Vision FPSO location

Activity details	
Proposed activity	Santos is planning for the progressive decommissioning of the Ningaloo Vision floating production, storage and offloading (FPSO) vessel and associated subsea infrastructure. The first phase of decommissioning will commence under the Cessation of Production and Floating Asset Removal (CoPFAR) EP, subject to Regulatory approvals. Activities include the removal of floating assets and preserving the remaining infrastructure ahead of future decommissioning activities.
Activity purpose	Removal of floating assets and preparation of remaining subsea infrastructure for final decommissioning.
Operational Area location	Operational area for the Ningaloo Vision CoPFAR EP is defined as: <ul style="list-style-type: none"> • A 500 m radius petroleum safety zone (PSZ) that extends around the DTM. • A 500 m radius around the DTM anchor spread • 500 m around and either side of all other subsea field infrastructure.
Water depth	340 m to 400 m
Timing and duration	<ul style="list-style-type: none"> • Activities associated with the removal of the floating assets will commence following the end of field life, which could occur at any time during the five-year period of the accepted EP. • Is planned to take between 45 and 90 days. • Individual inspection, maintenance, monitoring and repair (IMMR) campaigns are expected to take around 30 days.
Exclusion zone	A Petroleum Safety Zone (PSZ) of 500 m radius that extends around the DTM.

Commercial fishery implications

Santos has undertaken an assessment to define the environmental, social, economic and cultural aspects that may be affected by proposed activities. To do this we have considered the totality of the area where activity impacts and risks may occur.

The widest extent of this area is called the Environment that May Be Affected (EMBA), which for this activity is the outer boundary of a worst-case marine diesel spill resulting from the unlikely event of a vessel collision.

Table 1 provides an overview of those fisheries active in the Operational Area to determine potential for interaction with proposed activities. We have also assessed those fisheries that are entitled to fish in the EMBA. Operational Area coordinates can be found in **Table 2**.

Our fisheries assessment is based on publicly available government managed catch and effort data, our ongoing discussions with commercial fisheries representative organisations, and historic engagements for previous petroleum activities.

Table 1. Commercial fishery assessment

	Potential for interaction in the Operational Area	Entitled to fish in the EMBA
Commonwealth fishery		
Western Tuna and Billfish Fishery	No	Yes
Southern Bluefin Tuna Fishery	No	Yes
Western Skipjack Tuna Fishery	No	Yes
North West Slope Trawl Fishery	No	Yes
Western Deepwater Trawl Fishery	No	Yes
Western Australian fishery		
Exmouth Gulf Prawn Managed Fishery	No	Yes
Onslow Prawn Limited Entry Fishery	No	Yes
Pilbara Demersal Scalefish Fisheries (includes trap and trawl fisheries)	No	Yes
Pilbara Developmental Crab Managed Fishery	No	Yes
Mackerel Managed Fishery	No	Yes
West Coast Rock Lobster Managed Fishery	No	Yes
Gascoyne Demersal Scalefish Managed Fishery	No	Yes
Northern Demersal Scalefish Managed Fishery	No	Yes
Marine Aquarium Fish Managed Fishery	No	Yes
Specimen Shell Managed Fishery	No	Yes
West Coast Deep Sea Crustacean Managed Fishery	No	Yes
Abalone Managed Fishery	No	Yes
South-West Coast Salmon Fishery	No	Yes

Table 2. Operational Area coordinates

Operational Area	Latitude	Longitude
Point 1	114° 04' 59.953" E	21° 19' 55.411" S
Point 2	114° 04' 59.882" E	21° 23' 10.136" S
Point 3	114° 05' 37.292" E	21° 24' 36.100" S
Point 4	114° 04' 58.803" E	21° 24' 55.416" S
Point 5	114° 03' 41.666" E	21° 23' 49.587" S
Point 6	114° 03' 56.282" E	21° 21' 03.965" S

Consultation

Consultation provides Santos with an opportunity to receive input from authorities, persons and organisations whose functions, interests or activities may be affected by the proposed activities.

This input helps us to refine or change the management measures we are planning to address during potential activity impacts and risks.

Santos' objective for the proposed activities is to reduce environmental impacts and risks to a level that is As Low As Reasonably Practicable (ALARP) and acceptable over the life of the activity.

Providing input

Santos is seeking input on proposed activities by **26 June 2024**.

The merits of relevant person feedback provided through the consultation process will be considered during EP development, with responses summarised and included in the EP submitted to NOPSEMA for assessment.

Please let us know if you would like your personal/organisational details or any part of your feedback to remain private and we will ensure this remains confidential to NOPSEMA.

More information about how community members can participate in environmental approvals for activities proposed in Commonwealth waters has been published in a **brochure** by NOPSEMA.

Contact

E: offshore.consultation@santos.com

T: 1800 267 600

santos.com/offshoreconsultation